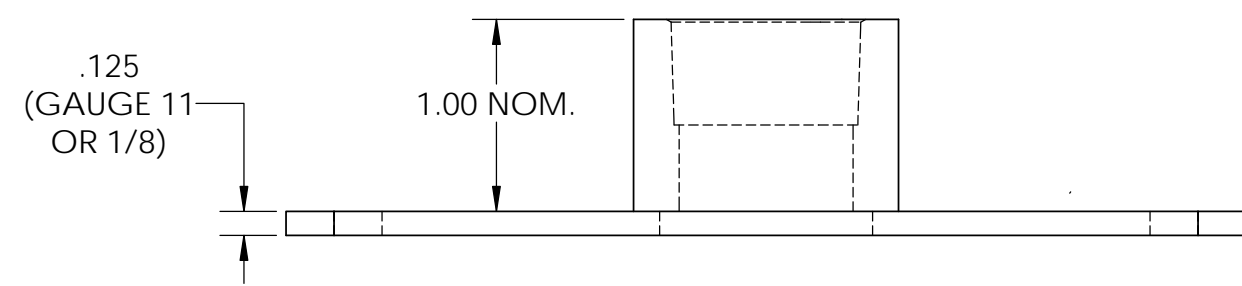
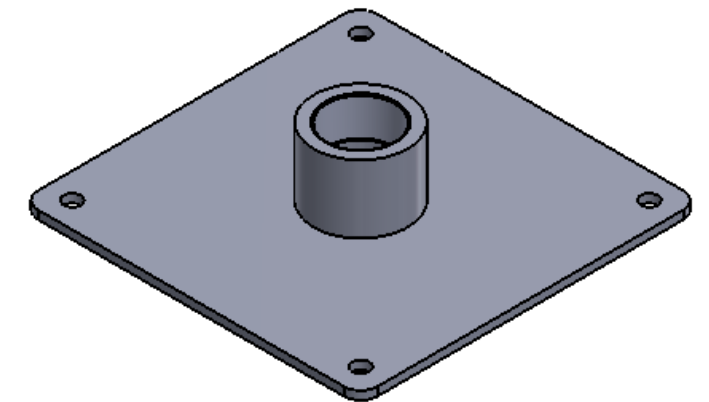
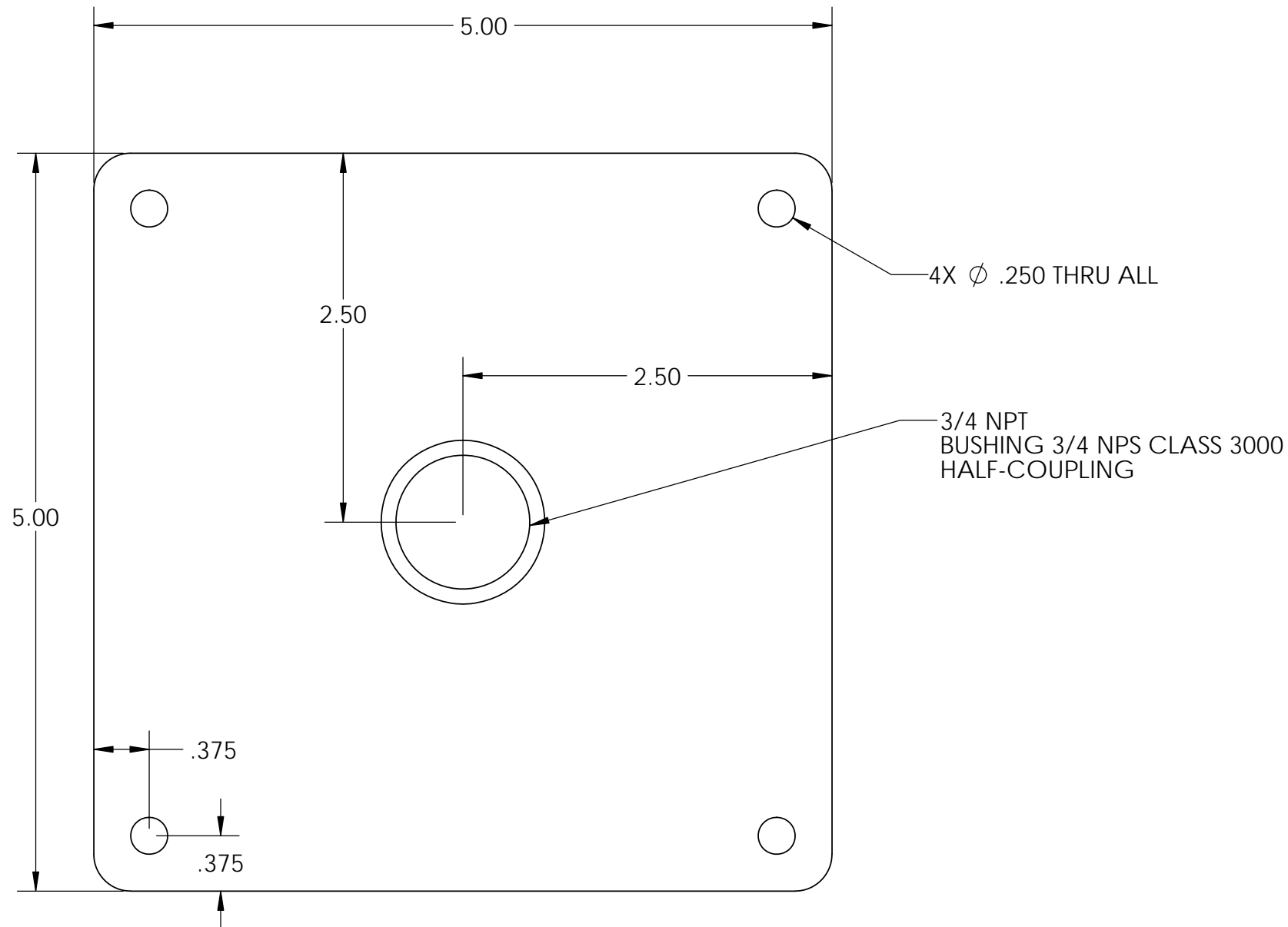


OUTLINE DIMENSION DRAWING

REVISIONS				
ZONE	REV.	DESCRIPTION	DATE	APPROVED
	0	INITIAL RELEASE	09APR2015	MR

BOM				
ITEM	QTY.	P/N - MATLIST	MATERIAL SPECIFICATION	DESCRIPTION
1	1	2551-0075-2	CARBON STEEL	11 GA OR 1/8" CARBON STEEL SHEET, 3/4 - 14 NPT BUSHING 3/4 NPS CLASS 3000 HALF-COUPLING

CONSTRUCTION NOTES	
N°	DESCRIPTION
1	EPOXI POWDER COAT BLACK
2	HALF COUPLING IS STANDARD AS PER ASME B16.11



UNLESS OTHERWISE SPECIFIED:
 DIMENSIONS ARE IN INCHES
 TOLERANCES:
 FRACTIONAL ±1/64
 ANGULAR: 0.5° BEND ±n/a
 ONE PLACE DECIMAL ±0.030
 TWO PLACE DECIMAL ±0.015
 THREE PLACE DECIMAL ±0.005

	NAME	DATE
DRAWN	ECR	09APR15
CHECK	XXXX	DDMMYY
ENG APPR.	XXXX	DDMMYY
MFG APPR.	BT	09APR15
Q.A	MR	09APR15

KAYDEN[®]
 INSTRUMENTS

TITLE: 3/4 FNPT DUCT MOUNTING PLATE

SIZE	DWG. NO.	REV
B	2551-0075-WEB	0

SCALE: 1:2 WEIGHT: SHEET 1 OF 1

PROPRIETARY AND CONFIDENTIAL
 INFORMATION CONTAINED IN THIS DOCUMENT IS CONFIDENTIAL AND PROPRIETARY INFORMATION OF TELEMATIC CONTROLS INC. THIS DOCUMENT MAY NOT BE REPRODUCED OR DISTRIBUTED FOR ANY REASON WITHOUT EXPRESS WRITTEN PERMISSION OF TELEMATIC CONTROLS INC. ALL RIGHTS OF DESIGN, INVENTION AND COPYRIGHT ARE RESERVED.

INTERPRET GEOMETRIC TOLERANCING PER:
 MATERIAL: SEE BOM
 FINISH: REMOVE BURRS & BREAK ALL SHARP EDGES
 DO NOT SCALE DRAWING