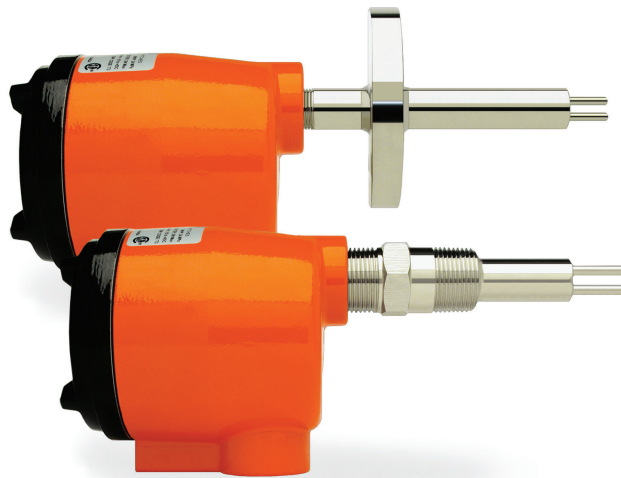


## Product Group Overview



# CLASSIC™ Series

Thermal Flow, Level, Interface &  
Temperature Switches & Transmitters



CRN  
Canadian  
Registration  
Number



**KAYDEN**®  
Helping the World Switch™

**CLASSIC™ 800 Features Overview**

Series	<b>CLASSIC™ 800</b>
<b>Models &amp; Applications</b>	<b>810, 812, 814, 816, 828, 830 &amp; 832</b> Flow, Level, Interface & Temperature
<b>Process Connections</b>	<b>810:</b> 1/2" to 2" MNPT Threaded <b>812:</b> Flanged <b>814:</b> Flanged Retractable Packing Gland <b>816:</b> 1" MNPT Threaded Retractable Packing Gland <b>828:</b> 1" to 3" Sanitary Tri-Clamp <b>830:</b> 3/4" FNPT (InLine) 832: Flanged (InLine)
<b>Insertion 'U' Lengths</b>	1.2", 2", 3", 4", 6", 9", 12" & 18" Standard (most models) Custom lengths available to 240"
<b>Sensor Material</b>	316/316L Stainless Steel, Titanium Gr. 2, Hastelloy C-276 & Monel 400 <b>830 &amp; 832:</b> 316/316L Stainless Steel c/w Nickel Braze <b>828:</b> 304/316/316L Stainless Steel
<b>Remote Electronics Option</b>	Explosion-proof - Standard
<b>Input Power</b>	Universal AC & DC
<b>Power Consumption</b>	Maximum: 6.0 watts (fully configured)
<b>Communications</b>	RS-485
<b>Outputs</b>	Two SPDT sealed relay contacts 4 amps resistive 230 VAC / 24 VDC Modbus via RS-485. 4-20 mA current loop
<b>Temperature Compensation</b>	Yes
<b>Operating Temperature - Sensor</b>	Continuous Use: -45°C to +200°C (-50°F to +392°F) <b>814 &amp; 816:</b> -45°C to +160°C (-50°F to +320°F)
<b>Operating Temperature - Electronics</b>	Continuous Use: -55°C to +65°C (-67°F to +167°F)
<b>Operating Pressure - Sensor</b>	Maximum Design Pressure: 24 MPa (3500 psig) Temperature derated. Visit kayden.com for pressure ratings per model.
<b>Self-Test</b>	Automated diagnostics performed on electronics & sensing elements
<b>Agency Approvals</b>	