

Application Note

Application Note: 070706

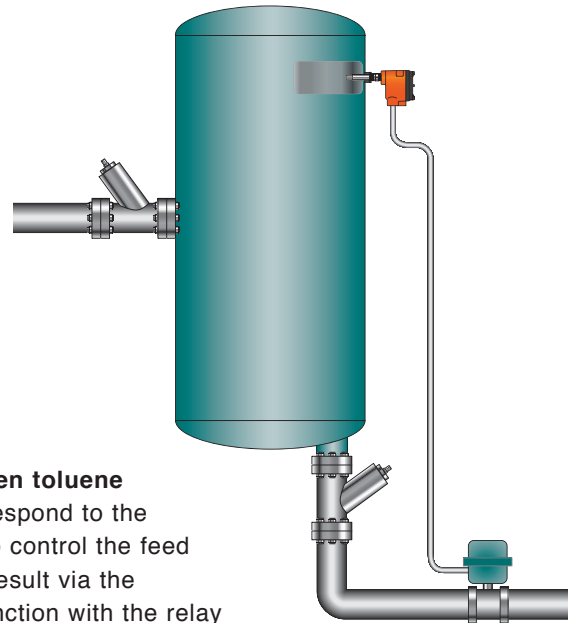
KAYDEN
I N S T R U M E N T S

High-Level Detection in a Holding Tank

Application: Detect and React to High Level in a Chemical Holding Tank.

Product: Kayden CLASSIC 800 Series Thermal Dispersion Flow, Level, Interface & Temperature Switch & Transmitter

- Notes:**
1. This diagram shows the Kayden switch mounted horizontally via a threadolet in the side of the tank. A flanged connection, or top mount installation may also be used as long as the probe is correctly sized to extend to the high-level point in the tank.
 2. This same application may be used for a low-level alarm function.
 3. For applications where the ambient temperature exceeds +167°F (+75°C) and / or physical access is limited a remote electronics configuration may be used.



Description:

The Kayden switch is used to detect the high level in a hydrogen toluene holding tank to prevent overflows. The Kayden switch is set to respond to the tank level and either energize or de-energize the relay contact(s) to control the feed or drain valve. The Kayden switch may also accomplish the same result via the 4-20mA analog output, or the 4-20mA output may be used in conjunction with the relay contact(s) to provide a back up alarm function.

Problem:

Finding a level switch that operates with high repeatability, is easy to install, and does not require constant maintenance and / or adjustment.

- Mechanical switches such as paddles or floats fail due to coating corrosion.
- Electronic instruments such as capacitance probes, ultrasonic, and radar level controllers are bothered by vapors, bubbles, coating, require constant attention, are more expensive, and are often difficult to install.
- Other thermal switches feature either analog or hybrid designs and do not provide full temperature compensation, allow for variable response without losing sensitivity, and have limited diagnostic functions.

Solution:

Kayden probes are all-welded, pressure tested, and not affected by coating, vibration, or the di-electric properties of the material. The electronics are easily adjusted without tools via the Display Panel keypad or remotely via the free RCM Software. Features include:

- Response time (the range, heater power, and set point(s) may be incrementally adjusted).
- 4-20mA analog output is available (CLASSIC 800 Series only).
- Relays may be wired NO or NC and set to energize above or below set point.
- Continuous, automatic self-diagnostics with redundant FAULT alarms.
- Visit www.kayden.com for more information and detailed specifications.

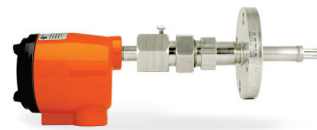
Applicable CLASSIC™ 800 Models



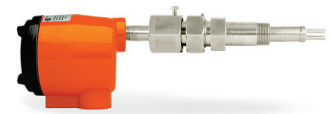
CLASSIC™ 810



CLASSIC™ 812



CLASSIC™ 814



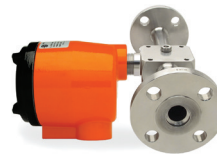
CLASSIC™ 816



CLASSIC™ 828



CLASSIC™ 830



CLASSIC™ 832

Ordering Information

Order Online

kayden.com Utilize our eCommerce website to order your Kayden products from your Authorized Kayden Distributor, or directly from Kayden. Please know that your local Authorized Distributor is supported whether you place orders online, via telephone, or email.

Contact Us

Telephone

1 (403) 253-1423
001 403 253-1423

Fax

1 (403) 255-0042 North America
001 403 255-0042 International

E-Mail

info@kayden.com

Web

kayden.com

Hours Monday – Friday 8:00 a.m. – 5:00 p.m. MST

Mailing Address 3364–114th Avenue S.E., Calgary, Alberta, Canada T2Z 3V6

Contact a Local Distributor

Distributors

Visit kayden.com to find a local Distributor near you. Distributors provide local inventory, technical support and service.



For more information about the CLASSIC Series or any of Kayden’s other products, please visit kayden.com